

**THE TEN MOST  
NOT  
WANTED LIST**

- 1) Fungus Knats
- 2) Black Flies
- 3) Citrus Mealy Bugs
- 4) Two-Spotted Spider Mites
- 5) Greenhouse Whitefly
- 6) Brown Soft Scale
- 7) Black Scale
- 8) White Aphids
- 9) Black Aphids
- 10) Thrips

Plantscape Designs Inc.  
Green and Clean  
Joseph R. Gallo Jr.  
President



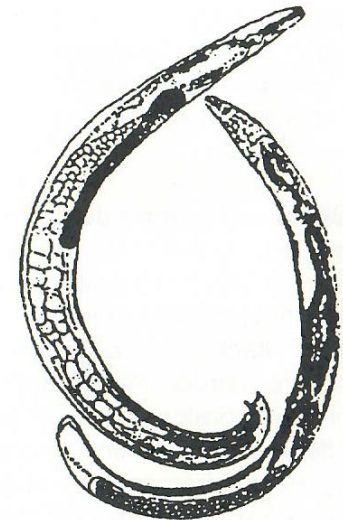
[www.pdiplants.com](http://www.pdiplants.com)

PO Box 3274  
Woburn, MA 01888  
781.279.0032 x 11  
781.279.0089 fax  
781.632.4476 cell  
[joe@pdiplants.com](mailto:joe@pdiplants.com)

**PLANTScape DESIGNS, INC.**

**BIOLOGICAL  
WEAPONS**

**BIOLOGICAL CONTROL**



***Beneficial Nematotles***

## BIOLOGICAL WEAPONS

**PDI** has knowledge of and access to predators and parasites for combating insects and pests in your workplace plants.

### BIOLOGICAL CONTROL REALLY WORKS !!!

#### **Black Fly Problem?**

Small black Fungus Gnats flying in front of your computer screen? Those annoying little pests! We can solve your problem with parasitic nematodes.



**Beneficial Nematodes:** Yes, good nematodes really do exist! These miniscule beneficials are barely visible to the naked eye as tiny threads. They attack only insects in moist soils or borer tunnels. Plants, earthworms, and vertebrates are completely unaffected by these tiny beasts. The major requirements for successful use are an environment that does not dry out, and appropriate application rates.

Beneficial nematodes can be supplied in a spray concentrate or a moist granular carrier. Please consult us with your particular needs.

#### **Spider Mite Problem?**

White webbing all over your plants? Dry brown look to leaves? A new generation is produced every eight days. Millions of eggs are produced by one female adult.

**Spider Mite Control:** An ever-increasing variety of predatory mites is available to accommodate specific environmental conditions and / or pests. The general appearance and life cycle of these mites is illustrated below. Our predatory mites are shipped in a granular suspension and can be distributed from a shaker bottle directly onto infested plants.

**Predatory mites do not harm plants or humans!**



**Phytoseiulus persimilis** is the most commonly used beneficial mite world wide. They actively seek out and consume 20 young or 5 adult spider mites per day. They quickly gain control of a spider mite outbreak.




*Orius*

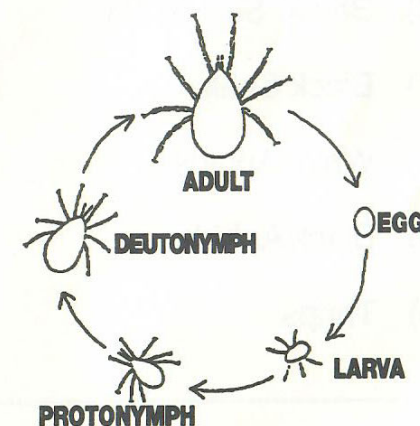
#### **Mealy Bug Problem?**

**Mealy Bug Control:** The citrus mealy bug is the most common species found in ornamental plantings. These mealy bugs are found on all parts of the plant, including the roots, but typically are clustered on stem tips and new growth.



**Cryptolaemus montrouzieri** is our predator we use here. Commonly called the Australian lady beetle. They also feed on black scale insects and aphids.

**Leptomastix dactylopii** is our parasite we use in the control of the citrus mealy bug. 



**Life Cycle ~ Predatory Mite**